

# VINYL & FIBERGLASS POOLS



***Automatic Pool Covers***

Your Safest Option™

# Vinyl

- Infused with UV and chemical protectants with a tighter weave mesh to improve performance
- Hybrid manufacturing process attaches webbing to vinyl
- Heat-welded webbing that color matches vinyl\* for a clean look
- Proprietary stitching process that helps to eliminate puckered vinyl

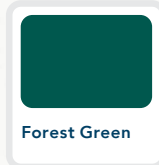
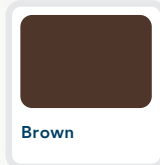
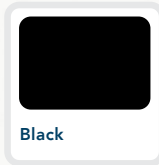
*\*Color matched webbing is currently not available for black or aqua vinyl*

# Motor

- 100% submersible and water-resistant
- 3/4HP electric motor
- 1,500lbs of torque



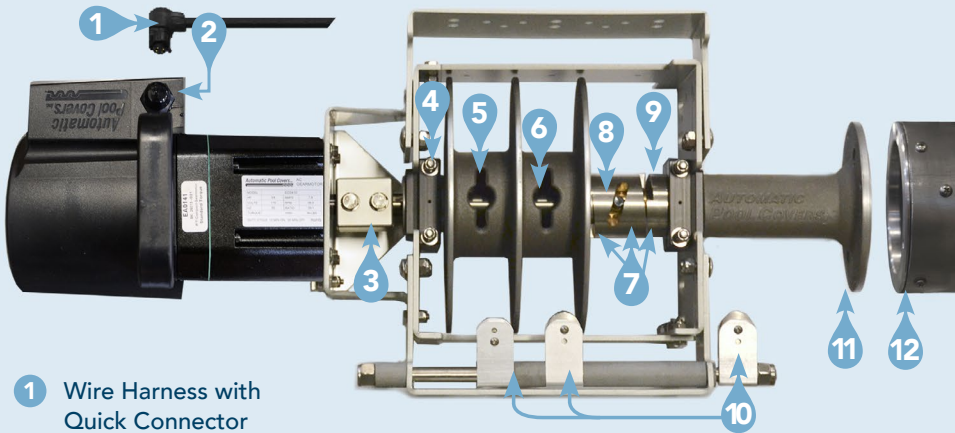
## Cover Colors



# AutoGuard™ Drive System

*AutoGuard™*

- Meets ASTM F1346 safety standards
- Quick-connect cords allow you to access the motor within seconds
- Pool cover rope attaches to the AutoGuard™ without needing fasteners
- Self-adjusting pulleys align with track height
- Works on pools up to 30ft wide and 90ft long without modifications

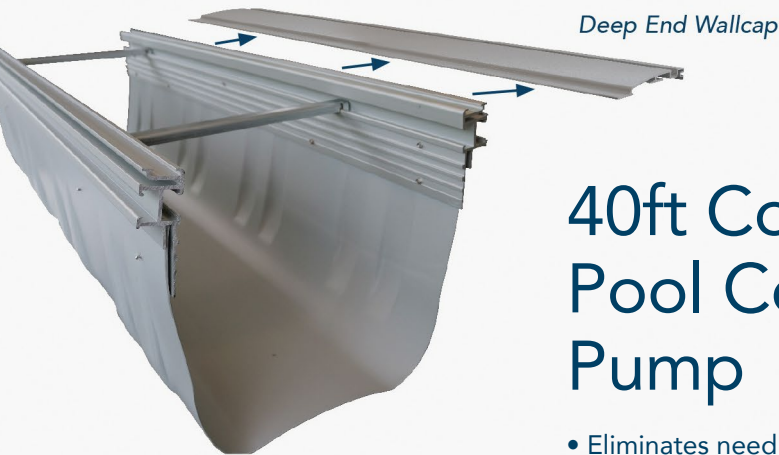


- 1 Wire Harness with Quick Connector
- 2 Quick Connect Power Receptacle
- 3 Quick Release Motor Coupler
- 4 Tension Block for Rope Reels
- 5 Rope Reels
- 6 Fastener-less Rope Key Holes
- 7 (3) Shifting Dogs  
(2) Single and (1) Double
- 8 Hardened Steel Drive Pin
- 9 Tension Block for Roll-Up Tube
- 10 Self-Adjusting Pulleys for Ropes
- 11 End Casting to Attach to Roll-Up Tube
- 12 Roll-Up Tube



# Polybox and Box-Rail

- Multipurpose Box-Rail design allows the housing to slide onto the wallcap
- Durable, molded housing is cut-to-length for each pool
- Drop-in brackets ensure a secure and level fit with no drilling required
- Stone Lid Riser option available for concrete lids.



## 40ft Cord Pool Cover Pump

- Eliminates need for extension cord
- Exclusive Caviar Black color
- Removes up to 1,745 gallons per hour
- CoverBlast® nozzle
- Automatic On/Off
- 3 year warranty

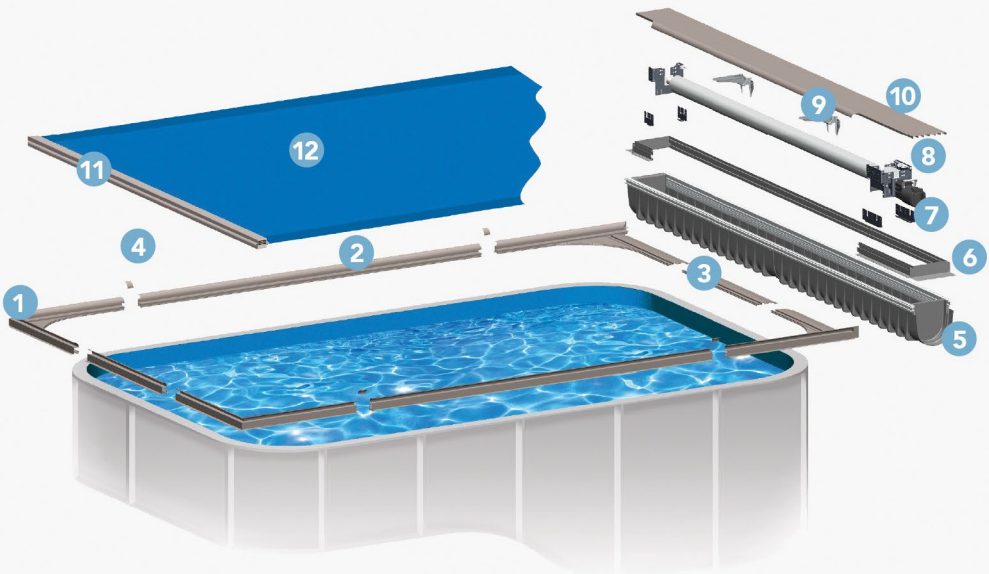




# THREE·SIXTY·FIVE®

from **Automatic Pool Covers, Inc.**

- All-inclusive safety cover system for vinyl-lined pools  
*Can also be compatible with fiberglass pools*
- Designed to fit 3" - 6" flange wall pools
- Pre-pour and post-pour kits can be ordered separately for your convenience
- 4 different corner options.
  - 2' radius • 3" chop • 6" radius • 90° corner



**1** One Piece Corner Assemblies

**2** Simple One-Piece Coping Design

**3** Integrated Wall Cap

**4** Clip-on Coping Splice

**5** Polymer Box Assembly

**6** Quick-Clip Lid Riser

**7** Drop & Lock Mounting Brackets

**8** AutoGuard™ Drive Mechanism

**9** HD2 - Removable Lid Bracket

**10** Flush, Slip-Resistant, Walk-On Lid

**11** Lead Edge Bar

**12** Vinyl Fabric with Color-Matched Webbing

# PowerTouch™ Controller

- Powered by SmartMotion™ Technology, it senses obstructions and automatically powers off the motor to protect against mechanical damage
- SmartMotion™ Technology allows you to adjust torque sensitivity settings directly from the touchpad
- Backlit for day and night operations
- Raised, responsive buttons make it easier to operate

**POWERTOUCH.**



# Invis-A-Rope™

Exclusive Invis-A-Rope™ blends into the track for a nearly invisible aesthetic customers love



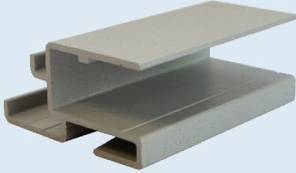
The competitor's rope



Our state of the art Invis-A-Rope™

# System Components

Innovation and quality are at the heart of every product we create for pools around the world.



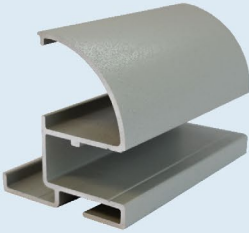
**FIBERGLASS RETAINER KIT**  
KA 0562

Compatible with our reusable forms or any coping stone to hide the cover tracks seamlessly.



**DECK ON DECK  
RETAINER KIT KA 0133**

For non-rectangle pools. Compatible with reusable forms or coping stones.



**FIBERGLASS COPING KIT**  
KA 0561

Sand-infused coping that allows you to pour your concrete up to the pool's edge.



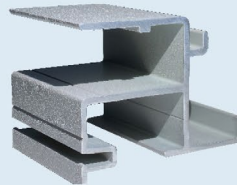
**INCLINE REUSABLE  
FORM KIT KA 0177**

Form angle extends toward the pool and then rounds back toward the pool deck. Enough for a 20x50 pool.



**VINYL LINER COPING**  
XC 1042, XC 1043

Top metal bullnose remains visible. Middle opening receives track. Bottom slot receives vinyl liner bead. Sand-infused, slip-resistant finish.



**VINYL LINER RETAINER**  
XC 1112, XC 1113

Receives track and bead receiver for vinyl liner pools. Compatible with our reusable forms or any coping stone.

# VINYL & FIBERGLASS POOLS



***Automatic Pool Covers***  
**Your Safest Option™**